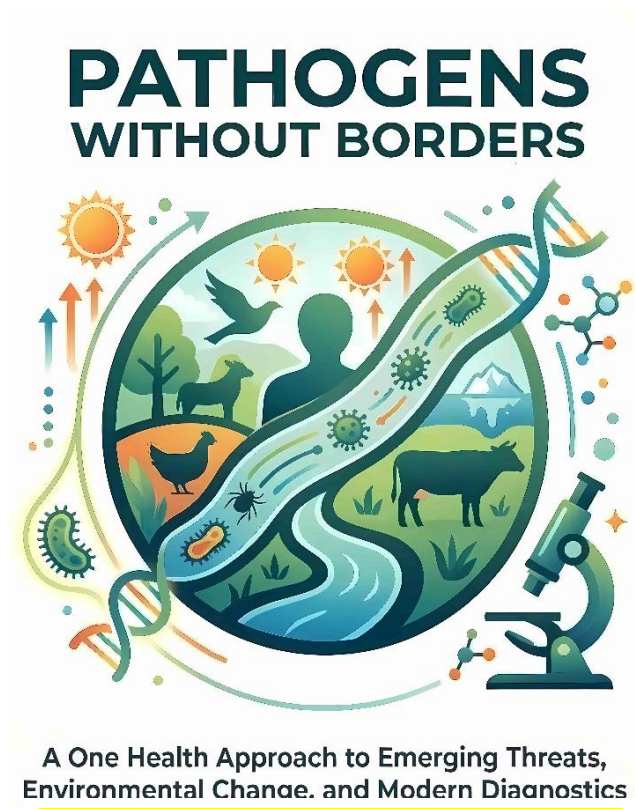




Spring 2026 Meeting
May 1-2 @ Ohlone College Newark Center



Online registration available at:
<http://ncasmbranch.org>

**Northern California Branch of the American Society for Microbiology
Spring Meeting Conference May 1-2, 2026
Ohlone Newark Center, 39399 Cherry St. Newark, CA 94560**

Friday May 1st

Continental Breakfast and Check in at Registration 7:30-8:30 AM

Session 1: Clinical

8:30am – Hantavirus Update in CA

Janet Manson, PhD. APHL CDC Fellow

9:20am – Can We Reverse the Rise of Antibiotic Resistance?

Sam Brown, PhD. Georgia Institute of Technology

ASM Distinguished Lecturer

11:10am – Tuberculosis Update

Kyla Sherwood, MD,MS. UC San Francisco TB Clinic

Session 2: Food Safety

8:30am – Plasma Activated Water: A Sanitizer for Fresh Produce

Joanna Rothwell, PhD UC Davis

9:20am – Tracking *Escherichia coli* 0157:H7 in Dairy Cattle

Xiaohong Wei, PhD UC Davis

11:10am – Food Safety Panel

Tom Sidebottom, PhD Regulatory Science Consulting, LLC

Matt Tom, MS. MTCC LLC, and Zach Eisenberg, AnrescoLabs

10:10 – 11:10: BREAK; Coffee/Tea, Vendors, Student Posters

12:00pm: LUNCH; Visit Vendor Booths and Research Posters

Session 3: Plenary

1:30pm – Measles Update in CA

Brandon Bonin, Dr. PH, MS, HCLD. Director, Santa Clara County Public Health Laboratory

2:20pm – How Immunodeficiencies Affect Tuberculosis Pathogenesis

Bennett Penn, MD, PhD. UC Davis School of Medicine

3:10pm – *Enterococcus faecalis* and *Candida albicans* Inter-Kingdom Interactions

Danielle Garsin, PhD. University of Texas Health Science Center, Houston

Carlyn Halde Distinguished Speaker

All Things Micro Mixer: Hors d'Oeuvres & NA Drinks 4-6 pm in the Exhibitor Lobby

Northern California Branch of the American Society for Microbiology
Spring Meeting Conference May 1-2, 2026
Ohlone Newark Center, 39399 Cherry St. Newark, CA 94560

Saturday May 2st

Continental Breakfast and Check in at Registration 7:30-8:30 AM

Session 1: Clinical

8:30am – Update on Chagas Disease in California

*Sphoorthy Rao, DrPH, HCLD(ABB)
and Andy Yanez, BS, PHM, CDPH*

9:20am – Syphilis Diagnostics

David Tomichak, BS, MT(ASCP), MBA, Bio-Rad Laboratories

Session 2: Microbiomes: Environmental Edition

8:30am – Microbiome of the Coyote Brush Plant

Abbey Schedler, BS. San Francisco State University

9:20am – Prebiotics & the Microbiome of Captive White Sturgeon

Jasper Leavitt, PhD Cal Poly Humboldt

10:10 – 11:10: BREAK; Coffee/Tea, Vendors, Student Posters

11:10am – New World Screwworm Coming Your Way?

Vit Kraushaar, MD, MPH. CDPH

11:10am – The SF Estuary Microbiome: Thousands of Genomes!

Lauren Lui, PhD Lawrence Berkeley National Laboratory

12:00pm: LUNCH; Visit Vendor Booths and Research Posters

Session 3: Plenary

1:30pm – Pathogen Adaptation in Chronic Versus Acute Infections

Sam Brown, PhD. Georgia Institute of Technology.

ASM Distinguished Lecturer

2:20pm – Practical AI for Microscopy Image Analysis

Phillip Baek and Liam McBride. Alchemy AI, San Francisco, CA.

3:10PM – Pathogen Patrol: How Our Blood Supply Stays Safe

Emily Kelly, MD, MSc, University of CA, San Francisco

We Thank Our Speakers, Exhibitors, and Sponsors for Contributing to a Vibrant Meeting!

General Information

Registration includes all sessions, exhibits, and all food and beverage functions provided by NCASM for the duration of the registration period

Registration Fee

NCASM member (non-student): \$75/one day; \$140/two days

Student: \$25/one day; \$50/two days

- Students must present valid student ID

Non-NCASM member: \$100/day; \$200/two days

Transportation & Parking

The Ohlone College offers parking in Lot B and C.

Membership

NCASM membership runs from January 1 to December 31. Membership is \$25.00 a year and student membership is \$5.00 a year. Membership in NCASM gives you a network within the microbiology community. As a member, you will receive notification of two general meetings each year, **free** CEUs at NCASM meetings, and information regarding regional meetings and events in your area.

Exhibits

Take the opportunity to visit with the companies that provide products and services to your laboratory. Exhibits are open during all the breaks.

Americans with Disabilities Act (ADA)

To comply with ADA requirements, NCASM and the Ohlone College will make every effort to provide for the participant's comfort and convenience.

NCASM Poster Session

NCASM will be hosting a poster session at this meeting.

Microbiology—themed posters can be presented during this session. For further information, contact Margaret Lee at:

posters@ncasm.org

Continuing Education

NCASM is an approved provider and accrediting agency (accreditation #0044) for California Laboratory Continuing Education. The NCASM Spring 2026 meeting qualifies attendees for 12 continuing education units (12 contact hours; for individuals attending both days of the meeting and pending two additional TBD speakers). CEU Certificates of Attendance will be available on-site at the end of each day.

Instructions for Receiving CEU

1. Evaluation forms will be distributed to participants requesting CEUs in each session during the first 10 minutes only. One one CEU evaluation form will be given for concurrent sessions, though attendees may record attendance at talks in either session. After the first 10 minutes, participants must pick up a CEU evaluation form at the registration desk. Participants who arrive after the first 10 minutes of a presentation are not eligible to receive CEU credit for that talk.
2. You may attend talks in either concurrent session, but you must record participation for each presentation on one evaluation form. Each talk is one (1) contact hour. You must submit the following to the CEU registration booth at the completion of your total attendance at the meeting:
 - a. A completed evaluation form from all the attended sessions
 - b. Your name tag to verify your paid attendance

You will receive a CEU certificate after signing the roster at the CEU registration booth

3. Only one (1) CEU certificate will be issued to each participant ****Certificates will not be mailed****