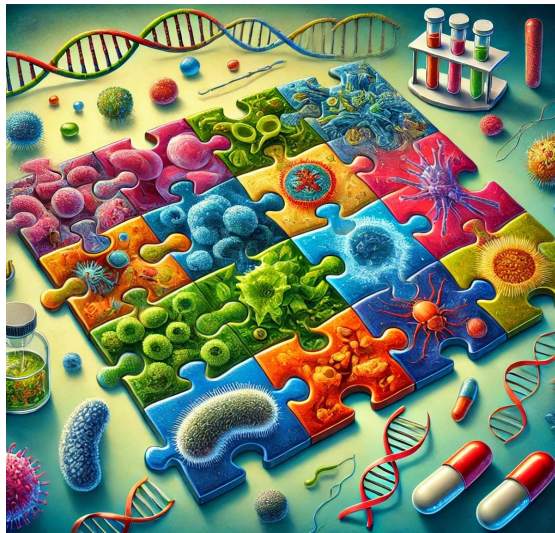




**Annual Fall Meeting
September 21, 2024**

A MICROBIAL JIGSAW PUZZLE



PLEASE SUPPORT OUR SUSTAINING MEMBERS... Their support helps bring you this meeting!

PLATINUM:
*AMERICAN SOCIETY FOR MICROBIOLOGY
DiaSorin Molecular
MEDICAL CHEMICAL CORPORATION*

GOLD:
ANAEROBE SYSTEMS

Online registration available at:
<https://ncasmbranch.org/>



Annual NCASM Fall Meeting September 21, 2024

PREREGISTRATION DEADLINE –on-line by noon on

9/14/24

****Meeting Location****

**Las Positas College
3000 Campus Hill Dr., Building 2400
Livermore, CA**

Directions to the Las Positas College Campus:

From the East Bay: Take I-580 East to Exit 51, CA-84W/Isabel Ave. in Livermore. Continue on Isabel Ave. to Campus Hill Dr.

From Sacramento: Take I-5 South to Exit 458B for I-205W. Remain on I-205W until it merges with I-580W. Take Exit 51, CA-84/Isabel Ave. in Livermore. Continue on Isabel Ave. to Campus Hill Dr.

Meeting: Building 2400 **Parking:** Lots D and E are closest (**Parking is FREE**)

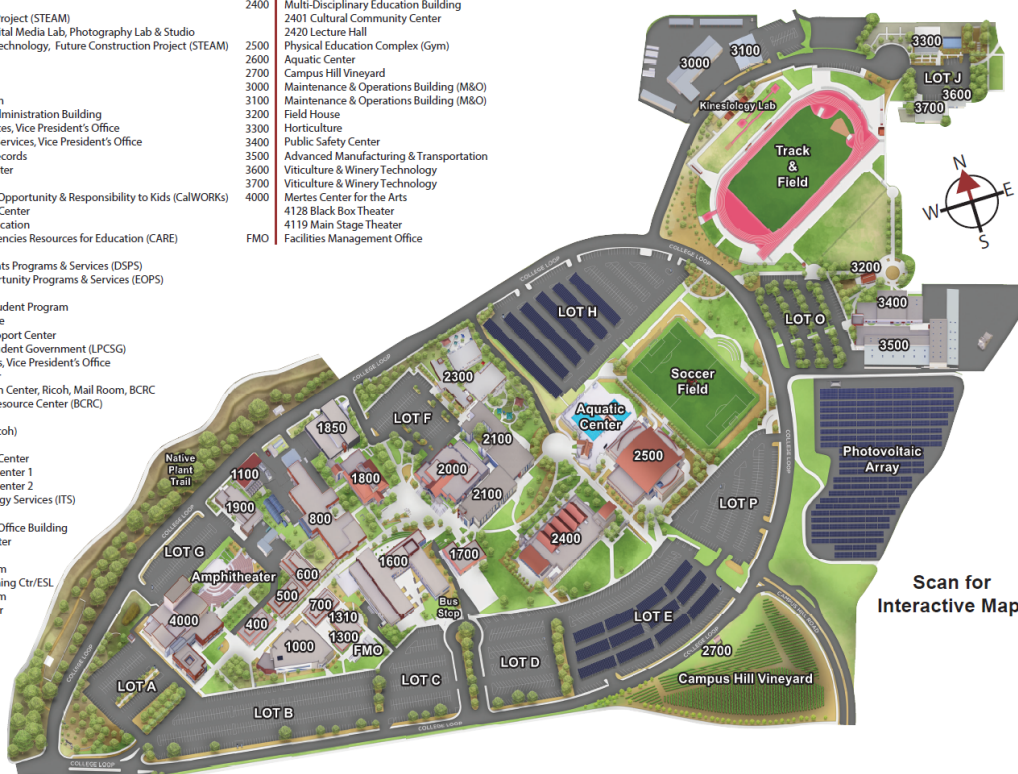
LAS POSITAS COLLEGE CAMPUS MAP

3000 Campus Hill Drive, Livermore, CA 94551 • www.laspositascollege.edu



KEY TO BUILDINGS

400 Middle College	2300 Child Development Center (CDC)
500 Math Classrooms	2400 Multi-Disciplinary Education Building
600 Future Construction Project (STEAM)	2401 Cultural Community Center
700 Graphic Design & Digital Media Lab, Photography Lab & Studio	2420 Lecture Hall
800 Viticulture & Winery Technology, Future Construction Project (STEAM)	2500 Physical Education Complex (Gym)
1000 Classroom Building	2600 Aquatic Center
1100 Central Utility Plant	2700 Campus Hill Vineyard
1300 Bookstore	3000 Maintenance & Operations Building (M&O)
1300 Veterans First Program	3100 Maintenance & Operations Building (M&O)
1600 Student Services & Administration Building	3200 Field House
1690 Academic Services, Vice President's Office	3300 Horticulture
1689 Administrative Services, Vice President's Office	3400 Public Safety Center
1670 Admissions & Records	3500 Advanced Manufacturing & Transportation
1642 Assessment Center	3600 Viticulture & Winery Technology
1620 Cafeteria	3700 Viticulture & Winery Technology
1668 California Work Opportunity & Responsibility to Kids (CalWORKs)	4000 Merets Center for the Arts
1604 Career/Transfer Center	4128 Black Box Theater
1690 Community Education	4119 Main Stage Theater
1668 Cooperative Agencies Resources for Education (CARE)	FMO Facilities Management Office
1616 Counseling	
1615 Disabled Students Programs & Services (DSPS)	
1668 Extended Opportunity Programs & Services (EOPS)	
1650 Financial Aid	
1658 International Student Program	
1680 President's Office	
1672 Registration Support Center	
1643 Student Life, Student Government (LPCSG)	
1669 Student Services, Vice President's Office	
1643 Welcome Center	
1700 Campus Safety, Health Center, Ricoh, Mail Room, BCRC	
1726 Black Cultural Resource Center (BCRC)	
1725 Campus Safety	
1717 Copy Center (Ricoh)	
1700 Mail Room	
1710 Student Health Center	
1800 Science Technology Center 1	
1850 Science Technology Center 2	
1900 Information Technology Services (ITS)	
2000 Library	
2100 Academic Support & Office Building	
21206 Computer Center	
21108 English Center	
21220 Honors Program	
21119 ILC/Math Learning Ctr/ESL	
21117 Math Emporium	
21215 Tutoring Center	



SATURDAY - September 21st - Las Positas College, Bldg. 2400 (Registration and Talks) and 2100 (Breakfast, Lunch and Vendors)

7:30-8:25 AM Badge Pick-up & Continental Breakfast

8:25-8:30 AM Welcome/Announcements

Elizabeth Zukoski, PhD, NCASM President

SESSION 1: Environmental/Applied Session

Convener: **TBD**

8:30 AM **Characterization of *Burkholderia* species in the Context of Lung Pathogenesis and Microbiota for Treatment**
Nicole Collette, PhD, Lawrence Livermore National Laboratory, Livermore, CA -- CANCELED

9:20 AM Rapid Detection of Bacterial and Viral Pathogens from Food and Agricultural Systems using Portable Non-Immuno-Based Technologies
Irwin Quintela, PhD, USDA - Agricultural Research Services (ARS), Albany, CA

10:15 AM BREAK - Coffee, Tea, and Networking - Bldg. 2100

10:45 AM Microbes in Deep Space: How Microbiology Research Facilitates Human Exploration
Jessica Audrey Lee, MSc, PhD, NASA Ames Research Center, Mountain View, CA

SESSION 2: Hot Clinical Topics in Microbiology

Convener: **TBD**

8:30 AM *Candida auris* - An Emerging Multi-Drug Resistant Fungal Threat
Sarah Elliott, PhD, DiaSorin Molecular, Burnsville, MN

9:20AM Metagenomic Next-Generation Sequencing for Diagnosis of Meningitis and Encephalitis
Steve Miller, MD, PhD, Delve Bio Inc., San Francisco, CA

10:45 AM New Paradigm in TB Drug Resistance Detection: Successes and Challenges of Genomic Sequencing
Varvara Kozyreva, PhD, California Department of Health, Richmond, CA

12:00 PM LUNCH - Bldg. 2100 - Vendor/Networking Session

SESSION 3: The Jigsaw Puzzle of Public Health

1:30 PM Empowering Diagnostic Stewardship with Customized Syndromic Testing- *Traci Beeby, DiaSorin Molecular, San Francisco, CA*

2:00 PM Assisted Object Detection: How AI Tools are Transforming Lab Microscopy for Parasitology and Bacteriology - *Brian Cahoon, Techcyte, Orem, UT*

2:30 PM Regulation Development for Direct Portable Reuse in California: Pathogen Monitoring in Raw Wastewater
Yeggie Dearborn, PhD, Cel Analytical Inc., San Francisco, CA

3:20 PM Biosafety and the FBI
Todd Piantodosi, Special Agent, Federal Bureau of Investigation - Weapons of Mass Destruction, Oakland, CA

GENERAL INFORMATION

Full Registration

Includes all sessions for the day, exhibits, refreshments, and all food and beverage functions provided by NCASM throughout the entire meeting.

Student Registration (Full-Time Students Only)

Includes sessions, exhibits, refreshments, and all food and beverage functions provided by NCASM for the time attending. When registering, students MUST submit a copy of a valid STUDENT I.D. CARD. One fee is valid for either day or for the entire meeting.

Transportation & Parking

Las Positas College offers free parking in Lot D and E.

Membership

NCASM membership runs from January 1 to December 31 of each year. Membership is \$25.00 a year and student membership is \$5.00 a year. Membership in NCASM gives you a network within the microbiology community. As a member you will receive notification of two general meetings a year, **free** CEUs at NCASM meetings, and information regarding regional meetings and events in your area.

Exhibits

Take the opportunity to visit with the companies that provide products and services to your laboratory. Exhibits are open during all the breaks.

Americans with Disabilities Act (ADA)

To comply with ADA requirements, NCASM and Las Positas College will make every effort to provide for the participant's comfort and convenience.

Continuing Education

NCASM is an approved provider and accrediting agency (accreditation #0044) for the California Laboratory Continuing Education. All NCASM Spring Meeting sessions qualify for 6 continuing education units (6 contact hours). CEU Certificates of Attendance will be available on-site at the **END of each day.**

Instructions for Receiving CEU:

1. Evaluation forms will be distributed to those participants requesting CEUs in each session during the **first 10 minutes only.** Only **one** CEU evaluation form will be given for concurrent sessions. After the first 10 minutes, participants must pick up a CEU evaluation form at the CEU desk. **Participants who arrive after the first 10 minutes of a presentation are not eligible to receive CEU credits for the lecture.**
2. You may attend talks in either concurrent session, but must **complete an evaluation** form for each presentation attended. Each talk is one (1) contact hour. There overall 6 contact hours; 3 contact hours in the AM session and 3 in the PM session. You must submit the following to the CEU booth at the **completion of your total attendance** at the meeting:
 - a. A completed evaluation form from all of the attended sessions.
 - b. Your name tag to verify your paid attendance.
3. You will receive a CEU certificate after personally signing the roster at the CEU booth.
4. Only one (1) CEU certificate will be issued to each participant.* ***No certificates will be mailed.*** **

Location of the CEU Booth will be announced at the beginning of each session.

REMEMBER:

- * YOU MUST OBTAIN AN EVALUATION FORM FOR EACH SESSION YOU ATTEND.
- * CEUs WILL **ONLY** BE GIVEN IN PERSON.
- * NO CERTIFICATES WILL BE MAILED.
- * CEUs WILL ONLY BE ISSUED DURING CEU DESK HOURS.
- * YOU MUST SIGN THE CEU ROSTER.

Online registration available at:

<http://ncasmbranch.org>