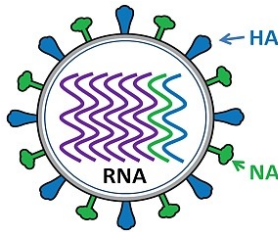
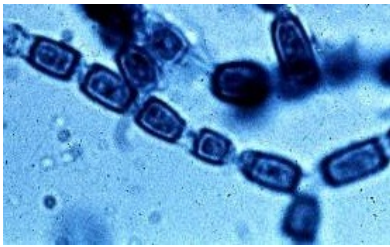




NORTHERN CALIFORNIA  
AMERICAN SOCIETY FOR MICROBIOLOGY

**Annual Spring Meeting  
MAY 6, 2023**

## *Fun with Microbes!*



***PLEASE SUPPORT OUR SUSTAINING MEMBERS... Their support helps bring you this meeting!***

***PLATINUM:***

*AMERICAN SOCIETY FOR MICROBIOLOGY  
DIASORIN MOLECULAR  
MEDICAL CHEMICAL CORPORATION*

***GOLD:***

*ANAEROBE SYSTEMS  
MERCK*

**Online registration available at:  
<https://ncasmbranch.org/>**



## Annual NCASM Spring Meeting May 6, 2023

**PREREGISTRATION DEADLINE** –online by noon on **5/1/2023**

**\*\*Meeting Location\*\***

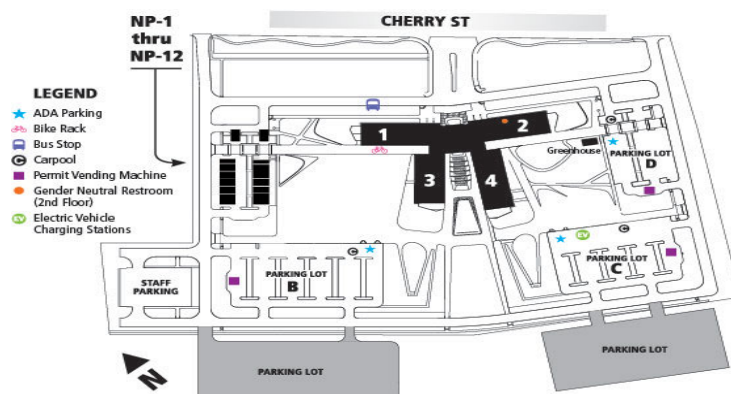
**Ohlone College, Health Sciences and Technology, Newark Campus**  
39399 Cherry St.  
Newark, CA 94560

### Directions to the Ohlone College, Newark Campus:

#### **From the East Bay:**

Take I-580 West to I-238 North toward I-880. Use the right two lanes to take exit 16A to merge onto I-880 South towards San Jose/ San Mateo Bridge. Continue on I-880 South and take exit 17 for Mowry Avenue toward Central Fremont. Use the right two lanes to turn right onto Mowry Avenue. Turn left onto Cherry Street. Ohlone College is roughly 200 ft on the right-hand side.

**Meeting:** Lobby (indicated by #3 and #4); Classrooms - **Parking:** Lot B and C are closest (Parking is **FREE**)



## SATURDAY - MAY 6 Ohlone College, Newark Campus - Lobby and Classrooms

**7:30-8:25 AM** Badge Pick-up & Continental Breakfast

**8:25-8:30 AM** Welcome/Announcements  
Rick Danielson, PhD, NCASM President

**SESSION 1: Microbes in the Environment**  
Convener: Rick Danielson, PhD DAC LLC

**8:30 AM** The Lettuce Microbiome and Resistome from Farm to Table: Insights into Public Health Issues  
*Maria Brandl, PhD, USDA-ARS, Albany, CA*

**9:20 AM** Chronic Wasting Disease (CWD): A Prion Disease of Wild and Farmed Cervids  
*Christopher Silva, PhD, USDA-ARS, Albany, CA*

**10:10 AM BREAK - Coffee, Tea, Vendors and Student Poster Session**

**11:00 AM** Public Health Microbiology in Action: Detecting and Preventing "Old" and "New" Communicable Diseases  
*Zenda Berrada, PhD, D(ABMM), CDPH MDL, Richmond, CA*

**SESSION 2: The Future of Microbiology**  
Convener: Barbara Haller, MD, PhD Dir. ZSFG, Clinical Laboratory, San Francisco, CA

**8:30 AM** Approaches to Development of Rapid Diagnostic Tests  
*Amanda Burnham-Marusich, PhD, Dx Discovery, Reno, NV*

**9:20 AM** Cell-Free Characterization, Design, and Engineering of Protein Glycosylation Systems  
*Weston Kightlinger, PhD, Northwestern Univ., Evanston, IL*

**11:00 AM** Biosafety: What is it? Why do we Care?  
*Lizzy Antaki-Zukoski, PhD, LLNL, Livermore, CA*

### Student Poster Presentations and Competition -View at Morning Break and Lunch

**Co-Chairs: Margaret Lee, PhD and Jashwin Sagoo**

Come see what our wonderful students are up to and help them hone their communication skills as you learn about their exciting research endeavors! There will be prizes for best posters. Winners will be announced at the beginning of the Careers in Microbiology Session

**11:50 AM LUNCH - Lobby - Vendors, Poster Session, NCASM Business Meeting**

**SESSION 3: Plenary Session: Clinical Microbiology Updates**  
Convener: Beatrix Kapusinszky, PhD PHLD(ABMM), Napa Solano Yolo Marin Mendocino Public Health Lab Director

**1:30 PM** California VRDL Update; *Debra Wadford, PhD, CDPH, Richmond, CA*

**2:30 PM** Updates and Whole Genome Sequencing of *Candida auris*; *Nancy Chow, PhD, CDC Atlanta GA*

**3:30 PM** **Careers in Microbiology: Strategies On How to Get One!**  
*You will hear from professional microbiologists on how they forged their career in microbiology and give recommendations on how to get one for yourself.*

# GENERAL INFORMATION

## Full Registration

Includes all sessions for the day, exhibits, refreshments, and all food and beverage functions provided by NCASM throughout the entire meeting.

## Student Registration (Full-Time Students Only)

Includes sessions, exhibits, refreshments, and all food and beverage functions provided by NCASM for the time attending. When registering, students MUST submit a copy of a valid STUDENT I.D. CARD. One fee is valid for either day or for the entire meeting.

## Transportation & Parking

The Ohlone College offers free parking in Lot B and Lot C.

## Membership

NCASM membership runs from January 1 to December 31 of each year. Membership is \$25.00 a year and student membership is \$5.00 a year. Membership in NCASM gives you a network within the microbiology community. As a member you will receive notification of two general meetings a year, **free** CEUs at NCASM meetings, and information regarding regional meetings and events in your area.

## Exhibits

Take the opportunity to visit with the companies that provide products and services to your laboratory. Exhibits are open during all the breaks.

## Americans with Disabilities Act (ADA)

To comply with ADA requirements, NCASM and the Ohlone College will make every effort to provide for the participant's comfort and convenience.

## NCASM Poster Session

NCASM will be hosting a poster session at this meeting. Microbiology—themed posters can be presented during this session. For further information, contact Janice Hamer at: [posters@ncasm.org](mailto:posters@ncasm.org)

## Continuing Education

NCASM is an approved provider and accrediting agency (accreditation #0044) for the California Laboratory Continuing Education. NCASM Spring Meeting Certificates of Attendance will be available on-site at the **END of each day.**

## Instructions for Receiving CEU:

1. Evaluation forms will be distributed to those participants requesting CEUs in each session during the **first 10 minutes only**. Only **one** CEU evaluation form will be given for concurrent sessions. After the first 10 minutes, participants must pick up a CEU evaluation form at the CEU desk. **Participants who arrive after the first 10 minutes of a presentation are not eligible to receive CEU credits for the lecture.**
2. You may attend talks in either concurrent session, but must **complete an evaluation** form for each presentation attended. Each talk is one (1) contact hour. There are three contact hours in each AM session and 2 in the PM.
3. You must submit the following to the CEU booth at the **completion of your total attendance** at the meeting:
  - a. A completed evaluation form from all of the attended sessions.
  - b. Your name tag to verify your paid attendance.
4. You will receive a CEU certificate after personally signing the roster at the CEU booth.
5. Only one (1) CEU certificate will be issued to each participant.  
**\*\* No certificates will be mailed. \*\***

Location of the CEU Booth will be announced at the beginning of each session.

## REMEMBER:

- \* YOU MUST OBTAIN AN EVALUATION FORM FOR EACH SESSION YOU ATTEND.
- \* CEUs WILL **ONLY** BE GIVEN IN PERSON.
- \* NO CERTIFICATES WILL BE MAILED.
- \* CEUs WILL ONLY BE ISSUED DURING CEU DESK HOURS.
- \* YOU MUST SIGN THE CEU ROSTER.

**Online registration available at:**  
<http://ncasmbranch.org>